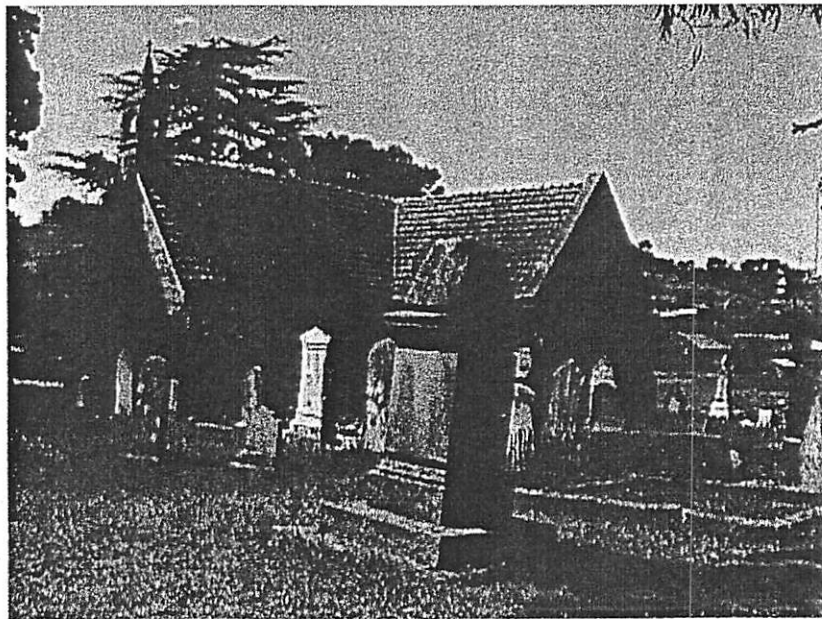


**BURIAL RECORDS  
OF  
ST MARK'S  
ANGLICAN  
CHURCHYARD**



**PICTON NSW**

**Compiled by the Picton and District Historical and Family History  
Society Inc.**

**BURIAL RECORDS**  
**OF**  
**ST MARK'S**  
**ANGLICAN**  
**CHURCHYARD**  
**PICTON NSW**

**Compiled by Ken Williams**  
**for**  
**The Picton and District Historical**  
**and Family History Society Inc.**

© 2001

Published by  
The Picton and District Historical and Family History Society Inc.  
PO Box 64,  
Picton NSW 2571

Copyright 2001

**ISBN      0-9579925-1-3**

## ST MARK'S CHURCH

St. Mark's Anglican Church in Picton was opened for worship in 1856, some fifteen years after the township had been surveyed. Edward Blacket, the diocesan architect, designed the church in 1848 with the foundation stone being laid in 1850 by the Minister of the parish, the Rev. Edward Rogers. The delay in building the church was caused by the shortage of labour as men went to the goldfields. The builders were Ramsdale and Horne.

The original church was tiny and as the population trebled over the next few years, the church was extended by adding twelve feet to the nave in 1872. Transepts were added in 1885, with the sons of Edward Blacket planning the extensions. St. Mark's was consecrated in 1885 by Bishop Barry, Bishop of Sydney. St. Mark's is built of sandstone, the interior fittings are cedar which were obtained from Mr. T. Larkin. The original roof was wooden shingles, these were replaced with slate shingles in 1904. In 1930 tiles were used to replace the slate roof.

The first recorded church services in the district were held at Major Antill's home in 1825. In 1830 he constructed a separate court house on his estate and it was here that church services were conducted until St. Mark's was built. The first rector was the Rev. Thomas Hassall from 'Denbigh' in Cobbitty. His huge parish was from Goulburn, across to Wollongong, to Narellan and out to Mulgoa. He visited Stonequarry intermittently and conducted services from 1826 to 1839. The Reverend Frederick Wilkinson administered a smaller area from 1839 to 1848. He lived at 'The Hermitage' at the Oaks, visiting his parish on horseback. His area covered Menangle, Stonequarry, The Oaks and Bowral. It was the third rector, Rev. Edward Rogers who was deeply involved with the building of the church. <sup>(1)</sup>

The present rector, Rev. Alan Wood has a more compact parish, with St. Mark's serving the town of Picton and several outlying villages.

<sup>(1)</sup> Maloney J and Weaver K. *St Mark's Picton*, May 1983.

**BURIAL RECORDS**  
**ST MARK'S ANGLICAN CHURCHYARD**  
**PICTON NSW**

This publication is a record to all persons known to have been buried in St Mark's Churchyard between 1858 and 1998. In all, 850 persons are listed.

The record has been compiled from transcriptions of headstones, memorials inside the Church, newsletters of St Mark's Church, St Mark's Burial Register 1905-1982 (State Records Office of NSW - Reel 196), and records of the Picton & District Historical and Family History Society Inc. which include family history records, obituaries and undertaker's records (Warters family),

In some records the place of burial has merely stated "Picton". In many instances it has been possible to verify from a secondary source that the place of burial is in fact St Mark's. In other instances the fact that other family members are definitely in St Marks and the surnames are not to be found in other graveyards/cemeteries in the close vicinity makes it a high probability that those persons are also buried in St Mark's. Those names are included in this record.

The grave number shown in the location field (L) should not be confused with the number allocated in previously published transcriptions of headstones. The transcripts are numbered by a visual headstone and/or an enclosure, which can be separated by a distance ranging from one to several metres. Within the area between the headstones there is visual and written evidence of additional burials. There is also evidence that at some time in the past, the graveyard extended further to the west, but flooding of Stonequarry Creek has caused erosion of the eastern bank and the loss of headstones into the creek. Vandalism has also played a part in the destruction of headstones.

Several years ago restoration work was carried out to the banks of the creek and many fragments of broken headstones were found. These fragments were laid into a small set of steps on the bank of the creek near the churchyard.

Where information varied between sources the 'correct' information was taken to be that contained in two or more sources that are identical. The record that contained the most information was also used as the source hence the source of a record may be shown as St Mark's Burial Register even though there is a headstone for that particular person. Many stonemason inscription errors were found on the headstones in relation to names and dates as well as the use of 'pet' names or second given names.

The transcriptions are faithful reproductions of the headstones but many are not buried where indicated as with members of the Warters family and the two servicemen (Baxter and Clarke) who died overseas.

If anyone can add to or correct any information contained in this record the Society would be very pleased to hear from you.

Ken Williams.  
Compiler  
The Picton and District Historical and Family History Society Inc.  
November 2001.